

Technical Data

Plan View

Dimensions

Exterior Dimensions (Inches)	27.6" x 31.1" x 81"
Interior Dimensions (Inches)	23.7" x 24.2" x 62.8"
Packaging Dimensions (Inches)	29.3" x 32.5" x 83.5"
Capacity (cu. ft.)	21 cu. ft.
Gross Weight	246 lbs

Construction

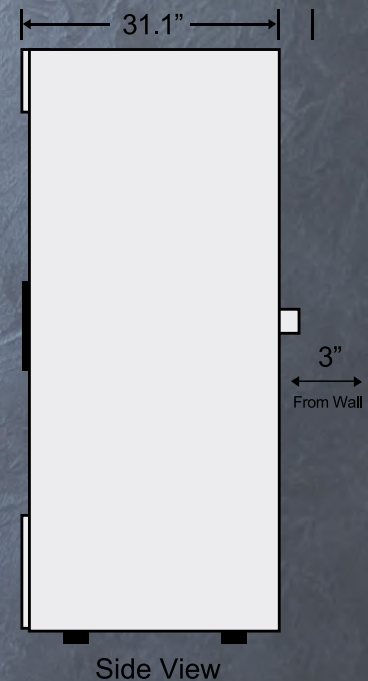
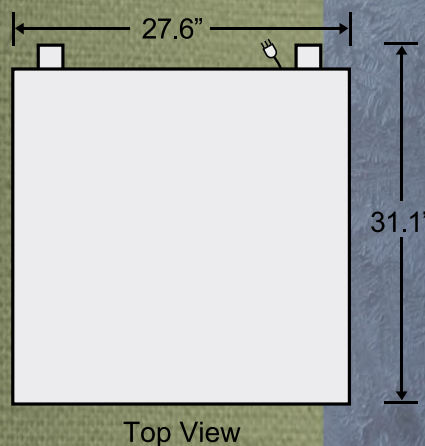
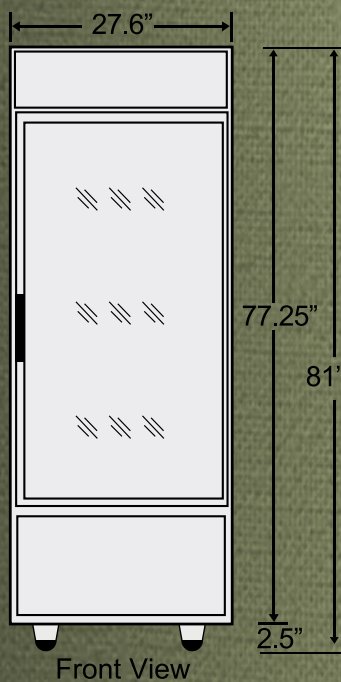
Exterior Material	Painted steel
Interior Material	Painted Aluminum
Door/Lid Material	Glass Door
Insulation Material	Cyclopentane
# of Doors	1
Self Closing Door	Yes
Lock Mounted	Yes
# of Shelves	4
Shelf Material	Plastic coated steel
Shelf Load Capacity	90 lbs
Climate Rating (F)	109

Cooling

Temperature Range	32° - 50° F
Refrigerant	R134a
Maximum Ambient Temperature Rating	100.4° F
Defrosting	Automatic
Temperature Display	Yes
Temperature Controller	Digital
Cooling System	Ventilated
Compressor H/P	1/4

Electrical

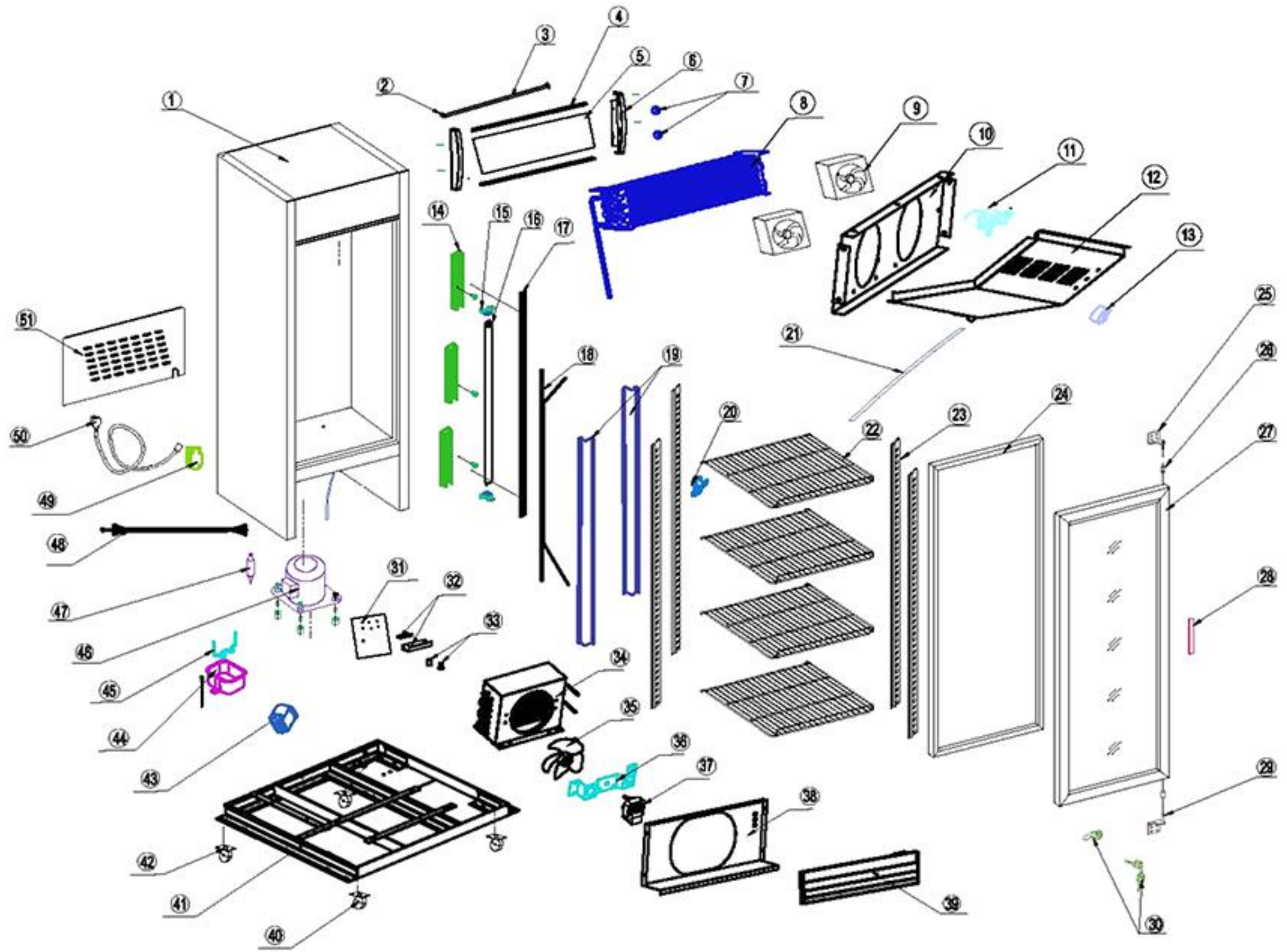
Voltage (v/Hz)	115/60
Amps	5.14



NEMA 5-15P



BGM-21



Part #	Part Name	Part Qty
1	Body	1
2	Light Support	4
3	LED(h)	1
4	Rail	2
5	Top Panel	1
6	Canopy	2
7	Light Switch	2
8	Fin Type Evaporator	1
9	Evaporator Fan Motor	1
10	Fan Blade	1
11	Digital Controller	1
12	Fan Cover	1
13	Controller Switch	1
14	Light Slot	3
15	Bracket	8
16	Interior LED	1
17	Light Cover	1
18	Evaporator Pipe	1
19	Back Pole	2
20	Shelf Clip	16
21	Evaporator Venting Pipe	1
22	Shelves	4
23	Shelf Strip	4
24	Door Gasket	1
25	Hinge (up)	1
26	Pad	2
27	Glass Door	1
28	Door Handle	1
29	Hinge (down)	1
30	Key and Lock	1
31	Plate	1
32	Ballast	2
33	Starter	2
34	Condenser	1
35	Fan Blade	1
36	Fan Bracket	1
37	Condenser Fan Motor	1



Part #	Part Name	Part Qty
38	Housing Plate	1
39	Front Grill	1
40	Castor without Brake	2
41	Bracket on the Bottom	2
42	Castor without Brake	2
43	Defrost Timer	1
44	Water Tray	1
45	Condenser Pipe	1
46	Compressor	1
47	Drier	1
48	Wire of Compressor	1
49	Wire Box	1
50	Plug	1
51	Rear Cover	1